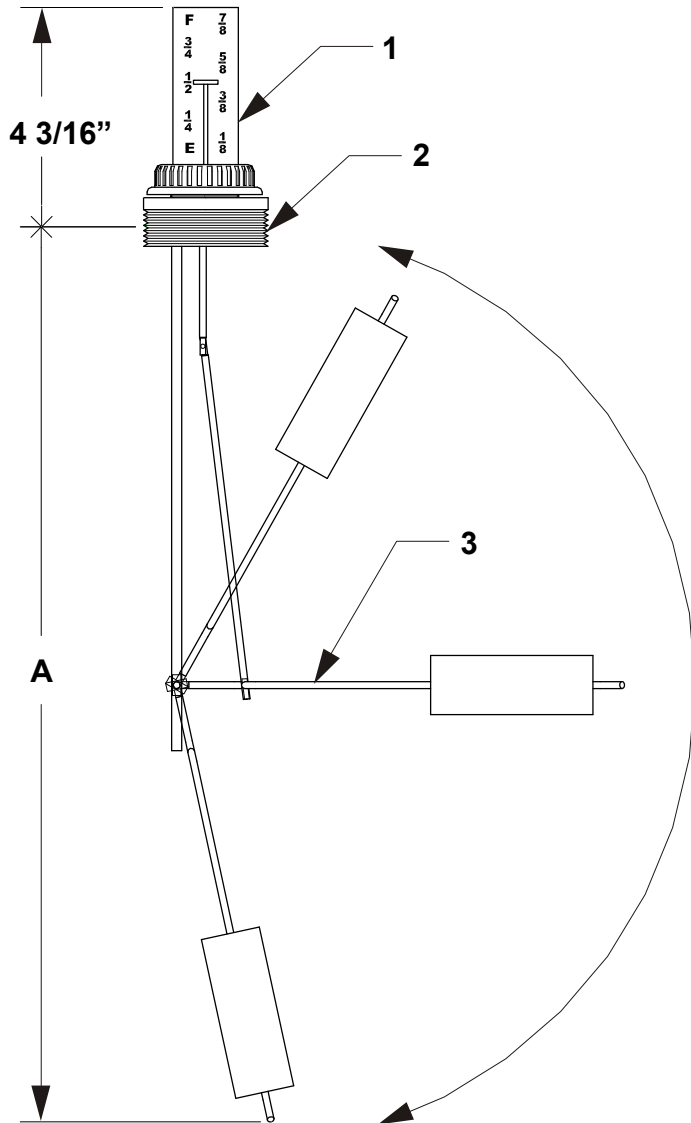


J.L. WINGERT CO.

Specification Sheet DIRECT READING LEVEL GAUGE MODEL D-2-[]

SS131002.B 02/17



SPECIFICATIONS

KEY	DESCRIPTION
1	LEVEL INDICATOR: Double cellulose acetate direct reading level gauge with red polyethylene level indicator. Tank level shown in fractions of total capacity.
2	TANK FITTING: Standard 2" NPT aluminium tank fitting
3	FLOAT ASSEMBLY: Stainless steel rod assembly with HDPE float

DIMENSIONS

MODELS	FITS	A	WEIGHT
D-2-17	1830-LL	17"	1 lbs. approx.
D-2-25	3550-LL	25"	1 lbs. approx.
D-2-36	6590-LL	36"	1 lbs. approx.
D-2-45	120160-LL	45"	1 lbs. approx.
D-2-56	160210-LL	56"	3 lbs. approx.
D-2-61	120140-LL	61"	3 lbs. approx.

Note: All dimensions are +/- 1/8". All weights are approximate. All dimensions are subject to change without notice.

MANUFACTURING: Mixers, Bypass Feeders, Filter Feeders, Bromine Feeders, Sample Coolers, Sludge Traps, Separators, Separator Systems, Tank Stands, Tank Package Systems, Glycol Feed Systems, Coupon Racks, Control Stations, NEMA Enclosures, Custom Packaged Systems and Specialty Welding

P.O. Box 6207 | Garden Grove, CA 92846-6207 | 11800 Monarch St. | Garden Grove, CA 92841-2113 | Phone (714) 379-5519 | Fax (714) 379-5549
Northern California Region | Phone (510) 487-5310 | Southwest Region | Phone (602) 470-1015 | Email: customerservice@jllwingert.com

www.jllwingert.com