

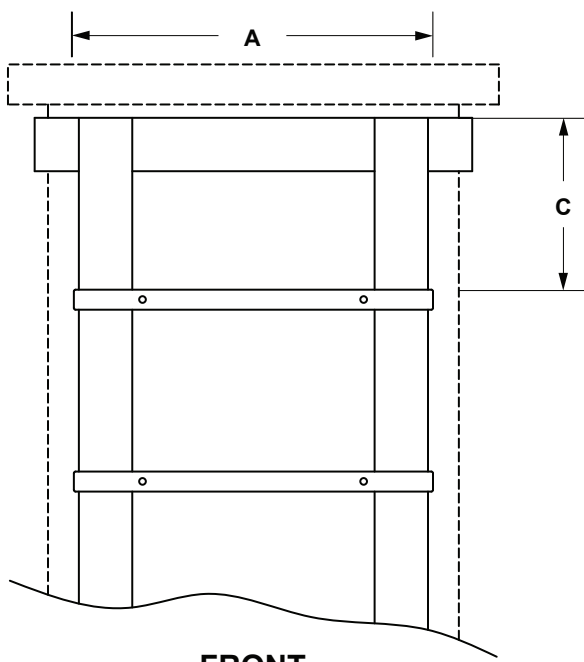


**Specification Sheet**  
**INSTRUMENT PANEL / NEMA BOX MOUNTING BRACKET**  
**OPTION -3**

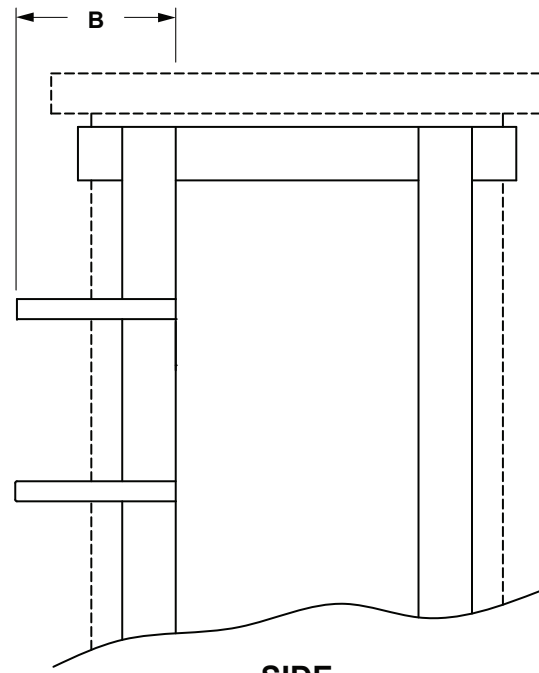
SS102003.D 02/17

**SPECIFICATIONS**

PART	DESCRIPTION
-3	<b>MOUNTING BRACKET:</b> Constructed of 1" carbon steel flat stock painted with water based enamel



**FRONT**



**SIDE**

**MOUNT OPTION -3**

**DIMENSIONS**

TANK SIZE	A	B	C	WEIGHT
<b>15 GALLON</b>	12 3/4"	6 1/4"	5"	3 lbs. approx.
<b>30 GALLON</b>	15"	6 3/4"	5"	3 lbs. approx.
<b>55 GALLON</b>	18"	7 1/4"	5"	4 lbs. approx.
<b>65 GALLON</b>	18 1/16"	7 1/4"	5"	4 lbs. approx.
<b>80 GALLON</b>	20 1/4"	7 1/2"	5"	4 lbs. approx.
<b>100 GALLON</b>	21 3/8"	8"	5"	4 lbs. approx.
<b>150 GALLON</b>	25"	8 3/4"	5"	4 lbs. approx.
<b>200 GALLON</b>	28 1/4"	9 1/2"	5"	5 lbs. approx.
<b>275 GALLON</b>	32 3/8"	10 1/2"	5"	6 lbs. approx.
<b>360 GALLON</b>	37 1/4"	11 1/4"	5"	7 lbs. approx.
<b>500 GALLON</b>	40 1/8"	11 3/4"	5"	7 lbs. approx.

**NOTE:** Please specify your control box size for bolt pattern when ordering

**Note:** All dimensions are +/- 1/8". All weights are approximate. All dimensions are subject to change without notice.

**MANUFACTURING:** Mixers, Bypass Feeders, Filter Feeders, Bromine Feeders, Sample Coolers, Sludge Traps, Separators, Separator Systems, Tank Stands, Tank Package Systems, Glycol Feed Systems, Coupon Racks, Control Stations, NEMA Enclosures, Custom Packaged Systems and Specialty Welding

P.O. Box 6207 | Garden Grove, CA 92846-6207 / 11800 Monarch St. | Garden Grove, CA 92841-2113 | Phone (714) 379-5519 | Fax (714) 379-5549  
 Northern California Region | Phone (510) 487-5310 | Southwest Region | Phone (602) 470-1015 | Email: customerservice@jllwingert.com

[www.jllwingert.com](http://www.jllwingert.com)