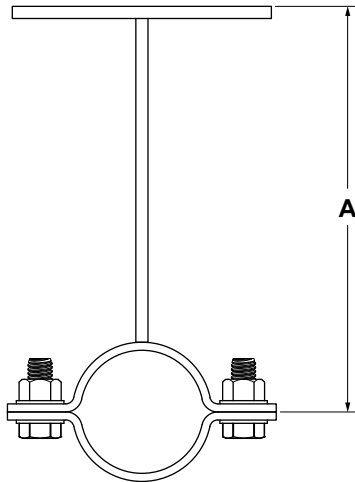


J.L. WINGERT CO.

Specification Sheet SEPARATOR WALL MOUNT BRACKETS MODELS BM-[]

SS052012.F 03/16

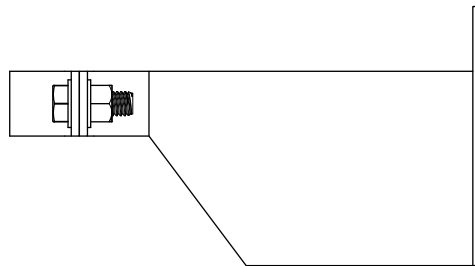
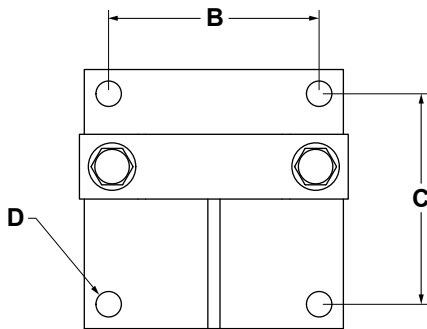


SPECIFICATIONS:

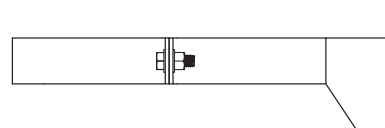
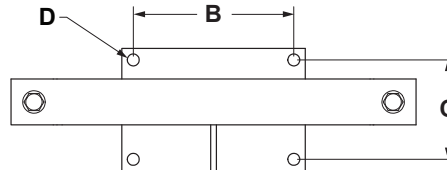
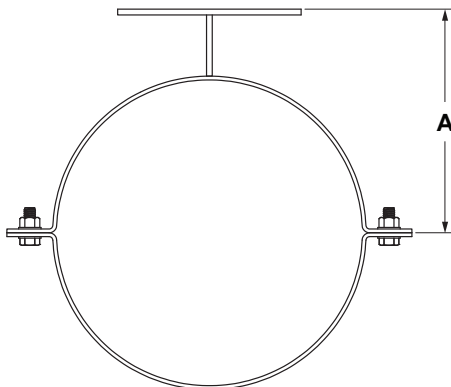
| | |
|---------------|--|
| BM-[] | Wall mount brackets are constructed from carbon steel and painted with water based enamel. All hardware is plated steel. |
|---------------|--|

DIMENSIONS:

| MODEL | SEPARATOR SIZE | A | B | C | D | WEIGHT |
|----------------|----------------|--------|--------|--------|--------|------------|
| BM-0050 | 1/2" | 6 1/4" | 3 1/4" | 3 1/4" | 25/64" | 2 lbs. |
| BM-0075 | 3/4" | 6 1/2" | 3 1/4" | 3 1/4" | 25/64" | 2 lbs. |
| BM-0100 | 1" | 6 3/4" | 3 1/4" | 3 1/4" | 25/64" | 2 1/2 lbs. |
| BM-0125 | 1 1/4" | 5 3/8" | 3 1/4" | 3 1/4" | 25/64" | 2 lbs. |
| BM-0150 | 1 1/2" | 5 3/8" | 3 1/4" | 3 1/4" | 25/64" | 2 lbs. |
| BM-0200 | 2" | 8 3/8" | 3 1/4" | 3 1/4" | 25/64" | 2 1/2 lbs. |
| BM-0250 | 2 1/2" | 8 3/8" | 3 1/4" | 3 1/4" | 25/64" | 2 1/2 lbs. |
| BM-0300 | 3" | 7 3/8" | 5 1/4" | 3 1/4" | 25/64" | 3 1/2 lbs. |



BM-0050, BM-0075, BM-0100, BM-0125, BM-0150, BM-0200, BM-0250



BM-0300

Note: All dimensions are +/- 1/8". All weights are approximate. All dimensions are subject to change without notice.

MANUFACTURING: Mixers, Bypass Feeders, Filter Feeders, Bromine Feeders, Sample Coolers, Sludge Traps, Separators, Separator Systems, Tank Stands, Tank Package Systems, Glycol Feed Systems, Coupon Racks, Control Stations, NEMA Enclosures, Custom Packaged Systems and Specialty Welding

P.O. Box 6207 | Garden Grove, CA 92846-6207 / 11800 Monarch St. | Garden Grove, CA 92841-2113 | Phone (714) 379-5519 | Fax (714) 379-5549
Northern California Region | Phone (510) 487-5310 | Southwest Region | Phone (602) 470-1015 | Email: customerservice@jllwingert.com

www.jllwingert.com