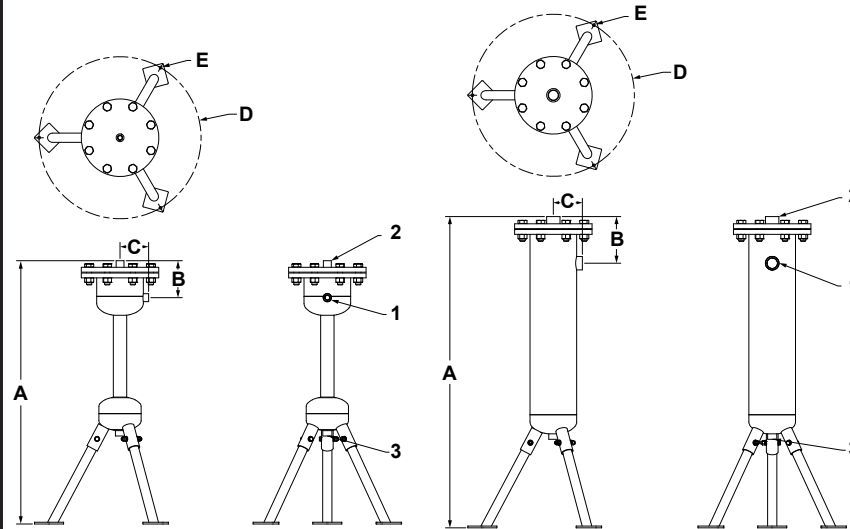


J.L. WINGERT CO.

Specification Sheet 1/2" TO 2 1/2" NPT, REMOVABLE DOME SEPARATORS MODELS RTE-[]

SS050003.A 03/16



RTE-0050, RTE-0075, RTE-0100

RTE-0125, RTE-0150

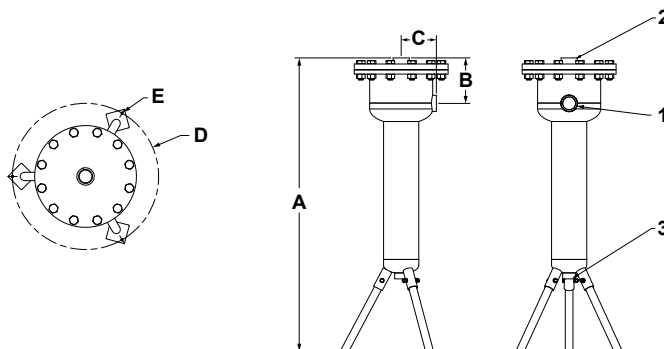
SPECIFICATIONS:

RTE-[]

Body is constructed of carbon steel and painted with water based enamel. All hardware is plated steel.

FLOW RANGE:

| MODEL | 4 PSI DROP | 12 PSI DROP |
|----------|------------|-------------|
| RTE-0050 | 8 GPM | 14 GPM |
| RTE-0075 | 14 GPM | 25 GPM |
| RTE-0100 | 28 GPM | 49 GPM |
| RTE-0125 | 49 GPM | 84 GPM |
| RTE-0150 | 67 GPM | 115 GPM |
| RTE-0200 | 90 GPM | 157 GPM |
| RTE-0250 | 129 GPM | 224 GPM |



RTE-0200, RTE-0250

DIMENSIONS:

| KEY | RTE-0050 | RTE-0075 | RTE-0100 | RTE-0125 | RTE-0150 | RTE-0200 | RTE-0250 |
|-------------|------------------------|-----------|-----------|-------------|-------------|-------------|-------------|
| 1 | 1/2" FNPT | 3/4" FNPT | 1" FNPT | 1 1/4" FNPT | 1 1/2" FNPT | 2" FNPT | 2 1/2" FNPT |
| 2 | 1/2" FNPT | 3/4" FNPT | 1" FNPT | 1 1/4" FNPT | 1 1/2" FNPT | 2" FNPT | 2 1/2" FNPT |
| 3 | 3/4" FNPT | 3/4" FNPT | 3/4" FNPT | 3/4" FNPT | 3/4" FNPT | 1 1/2" FNPT | 1 1/2" FNPT |
| A | 37 7/16" | 37 3/8" | 37 3/8" | 44 1/4" | 44 3/16" | 50" | 50 1/2" |
| B | 5 1/4" | 5 1/8" | 5 1/4" | 6 5/8" | 6 11/16" | 7 3/4" | 8 1/4" |
| C | 4" | 4" | 4" | 4 1/8" | 4 1/8" | 6" | 6 1/4" |
| D | 23" | 23" | 23" | 23" | 23" | 23" | 23" |
| E | 3/8" | 3/8" | 3/8" | 3/8" | 3/8" | 3/8" | 3/8" |
| WEIGHT | 57 lbs | 58 lbs | 60 lbs | 91 lbs | 91 lbs | 130 lbs | 133 lbs |
| PRESSURE | 150 PSI (10.3 bar) max | | | | | | |
| TEMPERATURE | 200° F (93° C) max | | | | | | |

Note: All dimensions are +/- 1/8". All weights are approximate. All dimensions are subject to change without notice.

MANUFACTURING: Mixers, Bypass Feeders, Filter Feeders, Bromine Feeders, Sample Coolers, Sludge Traps, Separators, Separator Systems, Tank Stands, Tank Package Systems, Glycol Feed Systems, Coupon Racks, Control Stations, NEMA Enclosures, Custom Packaged Systems and Specialty Welding

P.O. Box 6207 | Garden Grove, CA 92846-6207 / 11800 Monarch St. | Garden Grove, CA 92841-2113 | Phone (714) 379-5519 | Fax (714) 379-5549
Northern California Region | Phone (510) 487-5310 | Southwest Region | Phone (602) 470-1015 | Email: customerservice@jllwingert.com

www.jllwingert.com