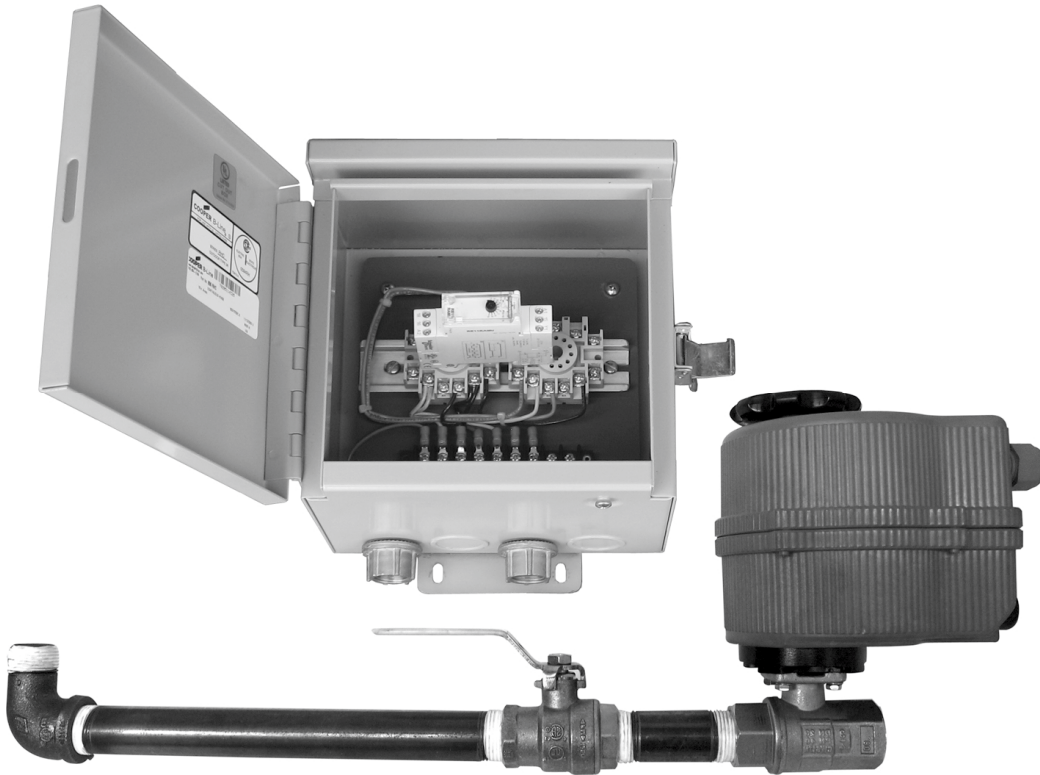


J.L. WINGERT CO.

SEPARATOR PURGE KIT OPERATION & MAINTENANCE MANUAL



PLEASE RECORD THE FOLLOWING DATA

(Information is located on the product label or packing slip)

Model Number: _____

Service: _____

Code: _____

Installation Date: _____

Installation Location / Application: _____

The above information will help when ordering replacement parts and accessories for your Separator Purge Kit.

FEATURED MANUFACTURED PRODUCTS

Mixers, Bypass Feeders, Filter Feeders, Bromine Feeders, Sample Coolers, Sludge Traps, Separators, Separator Systems, Tank Stands, Tank Package Systems, Glycol Feed Systems, Coupon Racks, Control Stations, NEMA Enclosures, Custom Packaged Systems and Specialty Welding

CONTENTS:	PAGE
1.0 INTRODUCTION	2
2.0 WARRANTY	2
3.0 UNPACKING	2
4.0 SAFETY	3
4.1 SAFETY HIGHLIGHTS	3
4.1 SAFETY HIGHLIGHTS—CONTINUED	4
5.0 LOCATION AND ENVIRONMENT	4
6.0 DETERMINE PURGE CYCLES	5
7.0 INSTALLATION / OPERATION	5
7.1 MANUAL PURGE KIT	5
7.2 MOTORIZED PURGE KIT	6
7.3 CONTINUOUS PURGE KIT	7
8.0 MOTORIZED PUGE KIT—WIRING DIAGRAMS / TIMER SETTING INSTRUCTIONS	8
8.1 MPK MODELS	8
8.2 SETTING THE MPK-XXXX TIMER	9
9.0 NOTES	12

1.0 INTRODUCTION

Thank you for your purchase of a Separator Purge Kit. This kit is designed to complete any separator installation.

2.0 WARRANTY

Separator Purge Kits are warranted against manufacturing defects in material and workmanship for one year from the date of shipment. Applications outside the service for which the product is designed, including any non-factory modifications, will automatically void any warranty. Items returned for warranty consideration must be transported via prepaid freight. Final warranty determination will be made upon inspection. The manufacturer will, at their discretion, repair or replace any defective item. Any repair or replacement outside warranted limitations will be considered a repair order and quoted accordingly. All replacements will be F.O.B. factory. There are no other implied or expressed warranties.

3.0 UNPACKING

Separator Purge Kits are assembled and ready for installation. Inspect packaging upon receipt for any damage. Unpack and inspect the product for damage and verify that goods received correlate with the packing list. Notify the factory of any discrepancies immediately upon receipt. If any product is damaged due to freight handling, contact the factory immediately for further assistance. It is recommended that photo documentation of any damage or discrepancy be supplied to support any claims.

NOTE: Most freight carriers allow only a limited time after receipt of goods to file a freight claim.

4.0 SAFETY

The equipment is designed and built with safety in mind. However, proper installation and operation can increase your overall safety.

DO NOT INSTALL, OPERATE OR REPAIR THIS EQUIPMENT WITHOUT READING THIS MANUAL AND THE SAFETY PRECAUTIONS CONTAINED THROUGHOUT.

BE SURE THAT ALL INSTALLATION, OPERATION, MAINTENANCE AND REPAIR PROCEDURES ARE PERFORMED ONLY BY QUALIFIED INDIVIDUALS.

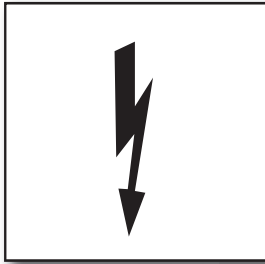
4.1 SAFETY HIGHLIGHTS

Read and understand the following safety highlights.



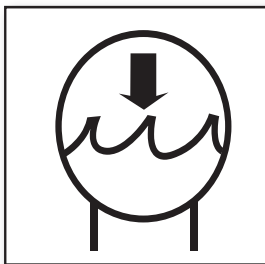
ELECTRICAL SHOCK CAN KILL

Do not perform any services without first disconnecting electrical service to all equipment. High voltage electrical power is present inside the electrical enclosure.



ELECTRICAL SERVICE CONNECTION

Install and ground equipment in accordance with the U.S. National Electrical Code, all local codes and the manufacturer's recommendations. Electrical installation and repair should be performed by a qualified individual.



WATER PRESSURE INSIDE THE UNIT

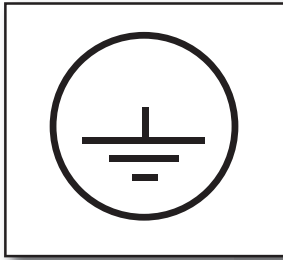
See design specification for maximum operating pressure. Do not perform maintenance or repair without first releasing the water pressure and draining the fluid from the unit.

4.1 SAFETY HIGHLIGHTS — CONTINUED



EQUIPMENT IDENTIFICATION LABEL

Identification label provides equipment information. Be sure the voltage, phase and frequency of the input power are as specified on the Equipment Identification Label and conform with your requirements.



GROUND CONNECTION

Input power and ground system for safe operation of the equipment. See your local and National Electrical Codes for proper grounding methods.

5.0 LOCATION AND ENVIRONMENT

*Every installation is different. The separator and purge kit may be located indoors or outdoors. If outdoors, it is suggested that components be shielded from harsh weather conditions. All electrical connections should be completed by a qualified electrician to meet local building codes. **DO NOT ATTEMPT ELECTRICAL INSTALLATION OR SERVICE WORK UNTIL MAIN POWER SUPPLY IS DISCONNECTED.***

6.0 DETERMINE PURGE CYCLES

For best results when using a pre-selected purge kit (manual or motorized), purge while the system is in full operation. To determine the necessary frequency, purge often at first; then calculate the rate with regard to the actual volume of separated solids. **Accumulated solids could overflow the collection chamber and adversely affect the separator performance if not purged regularly.**

7.0 INSTALLATION / OPERATION

There are three standard purging options available.

7.1 MANUAL PURGE KIT (PK)

A manual purge kit (Fig. 1) is the most economical method to purge your separator. This purge kit is preassembled and ready to install. Simply thread the male end of the elbow into the drain port of the separator and tighten all components to ensure a leak tight installation. PTFE pipe tape is pre-applied on all threads. Replace any tape that may have been damaged in transit. Take caution against over tightening threaded fittings.

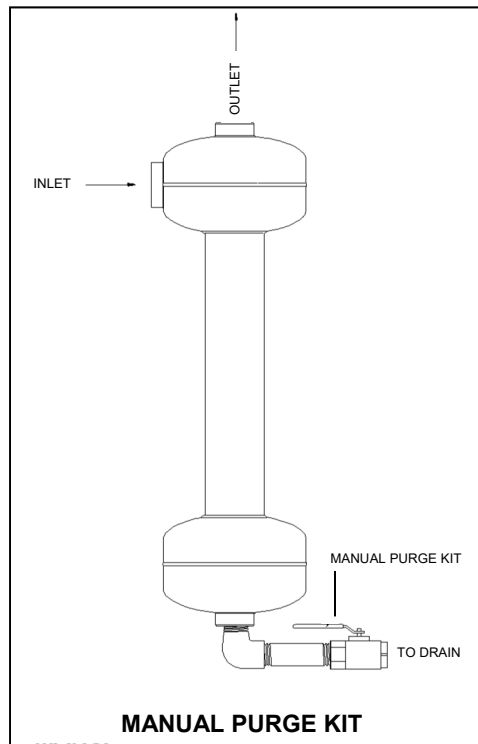


Figure 1

7.2 MOTORIZED PURGE KIT (MPK)

Motorized purge kits (Fig. 2) are convenient for remote locations or where frequent purging is required. This system is controlled via a timing device with programmable options for both frequency and duration of purging of an electronically actuated motorized ball valve.

A motorized purge kit is available in either economy and deluxe models. Wiring and timer setting instructions are in sections 8.0 and 9.0. These purge kits are preassembled and ready to install. Simply thread the male end of the elbow into the drain port of the separator and tighten all components to ensure a leak tight installation. PTFE pipe tape is pre-applied on all threads. Replace any tape that may have been damaged in transit. Take caution against over tightening threaded fittings. Motorized Purge Kit includes Manual Purge Kit, Motorized Ball Valve and a Timer.

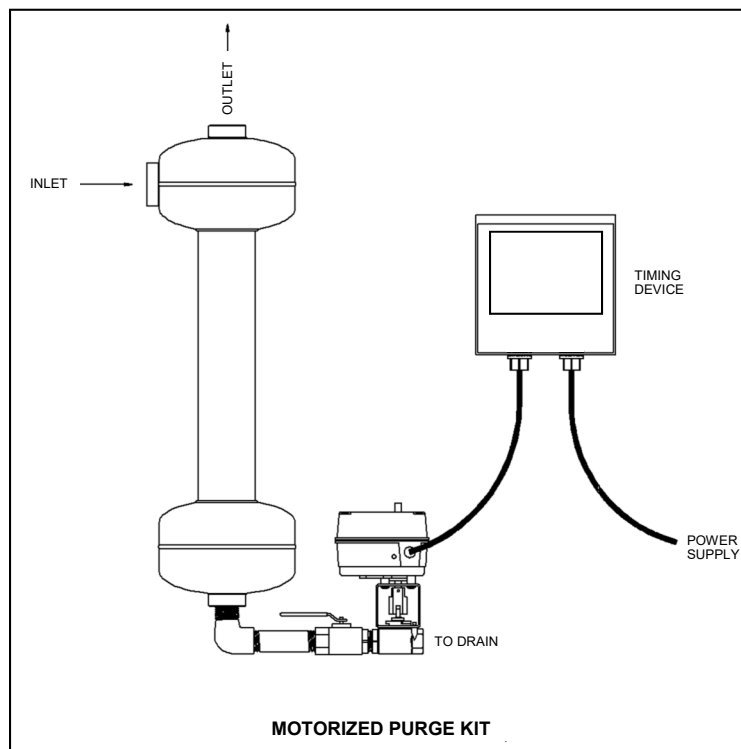


Figure 2

7.3 CONTINUOUS PURGE KIT (RT)

Unlike the other purge kits, the continuous purge system (Fig. 3) is always at work. This system removes solids as they collect in the solids collection chamber by bleeding a

small amount of water into a recovery tank where the solids are stored. The bleed water is then returned to the system thus providing the least amount of wasted water.

This type of purge system is required where there is a high solid count, where solids cannot be flushed into a drain or where water conservation is a paramount issue.

This purge kit is supplied with manual purge kit components and a recovery tank and is ready to install, if the IP option is ordered. Simply thread the male end of the elbow into the drain port of the separator and tighten all components to ensure a leak tight installation. PTFE pipe tape is pre-applied on all threads. Replace any tape that may have been damaged in transit. Take caution against over tightening threaded fittings. An optional feature for this system is a Recovery Tank Service Indicator Package (Option IP) which includes a flow controller, switch and isolation valves. This package can be connected to an alarm to indicate that the recovery tank filter bag needs servicing.

To service the recovery tank, close the isolation valves. Carefully open the air release valve on the lid to relieve any internal pressure. Only when the tank pressure is neutralized should the recovery tank lid be removed and the internal filter bag and strainer be cleaned or replaced.

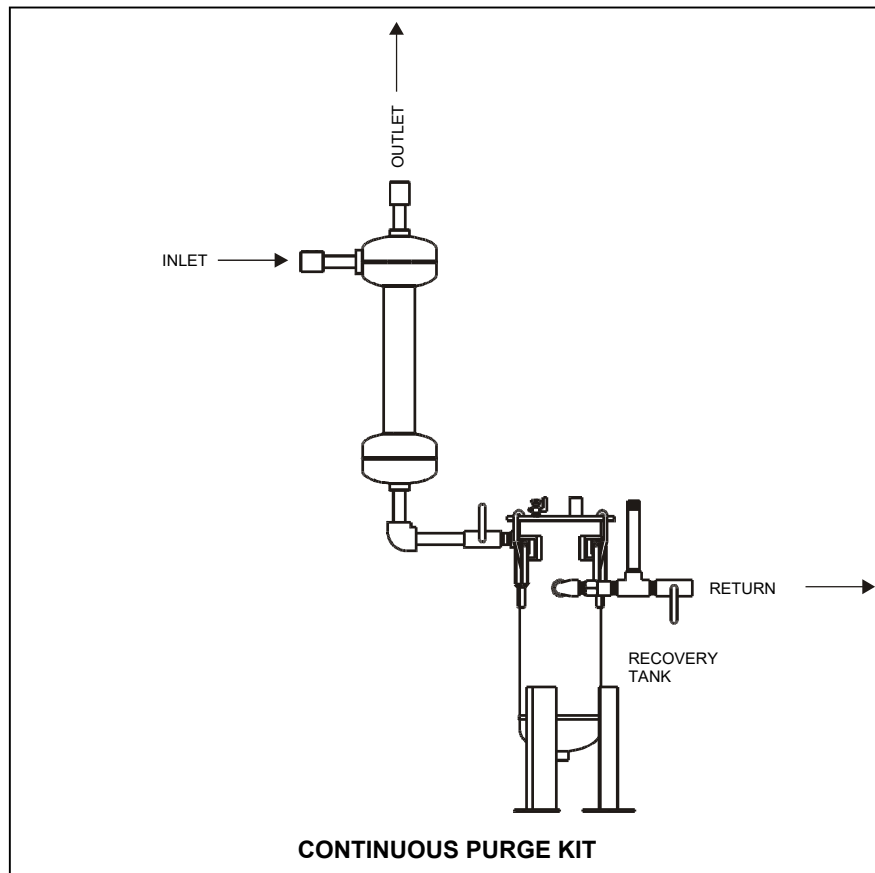


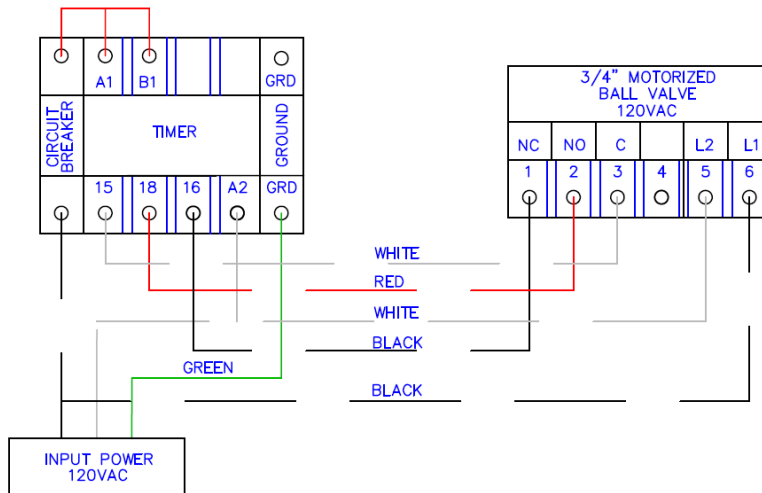
Figure 3

8.0 MOTORIZED PUTGE KIT—WIRING DIAGRAMS / TIMER SETTING INSTRUCTIONS

Note: All electrical connections should be completed by a qualified electrician to meet local building codes. **DO NOT ATTEMPT ELECTRICAL INSTALLATION OR SERVICE WORK UNTIL MAIN POWER SUPPLY IS DISCONNECTED.**

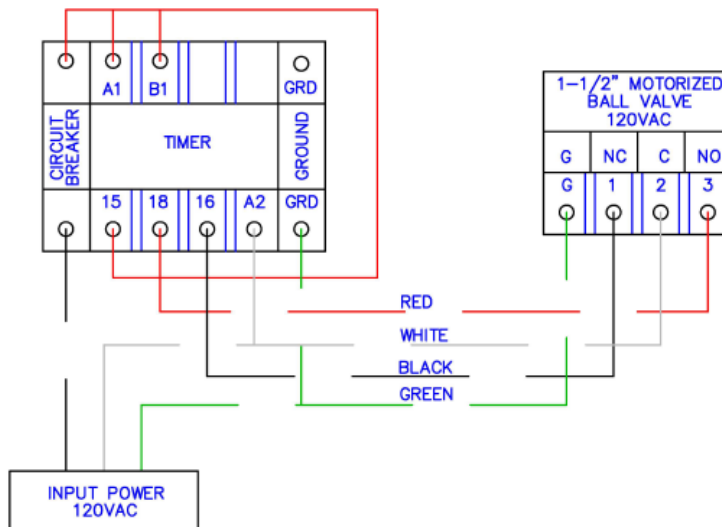
8.1 WIRING DIAGRAM

For MPK-0075, 3/4" Motorized Purge Kit wiring, refer to Figure 4. For MPK-0150 and MPK-0200, 1 1/2" to 2" Motorized Purge Kit wiring, refer to Figure 5.



*Note: Dashed line indicates customer supplied wiring. Remove the factory installed jumper between B1 and 15.

Figure 4



*Note: Dashed line indicates customer supplied wiring.

Figure 5

8.2 SETTING THE MPK-XXXX TIMER

All three MPK's use the same timer.

With unit powered do the following:

Press and Hold the SET & ADJ button for approx. 3 seconds, or until the letter in the left middle starts to blink

Press the ADJ button until b is displayed, then press SET

The screen now displays the ON time, the time that the valve is open, and by default the units are set to Minutes:Seconds (MS)

This is the correct range, press SET, once and now the Minute value is blinking. It is suggested to have this set to 0.

Press the SET button and now the tens digit of the seconds is blinking. By default this is 3 and the one digit is 0 making the ON time 30 seconds which is desired.

Press the SET button multiple times until OFF is displayed.

Change the OFF range from MS to HM by pressing the ADJ button until HM is displayed.

Press the SET button, and change the OFF time to be 1:00 (HH:MM)

Press the SET button multiple times to get to the home screen. This should show 1:00 on the top row and a Down arrow should be blinking in the bottom right. The top row value is the current value, so as time goes on, it will count down based on the units selected.

