

PARTS LIST		
KEY	ITEM	DESCRIPTION
1	INLET	5IN 125# FF FLANGE
2	STRAINER	5IN CAST IRON WITH STAINLESS STEEL BASKET STRAINER
3	PUMP	GOULDS: 55BF1L9C0 600 GPM @ 40'TDH 10HP TEPE
4	SKID	EPOXY COATED CARBON STEEL
5	CONTROL PANEL	NEMA 4X ENCLOSURE MAIN POWER DISCONNECT MAIN POWER LED INDICATOR PUMP H-O-A SWITCH PUMP RUNNING LED INDICATOR PURGE H-O-A SWITCH SYSTEM PURGING LED INDICATOR ALARM LED INDICATOR 460VAC TO 120VAC TRANSFORMER PUMP CONTACTOR AND OVERLOAD PROGRAMMABLE PURGE CONTROLLER REMOTE START/STOP TERMINALS (24VDC) REMOTE PURGE TERMINALS (24VDC) WIRED FOR 460VAC/3Ph/60Hz
6	SEPARATOR	XFD-0500 FLOW AT 4 PSID: 554 GPM FLOW AT 12 PSID: 959 GPM
7	PURGE	1-1/2" FPT MOTORIZED PURGE
8	DISCHARGE	5IN 150# RF FLANGE
DRAWN RB		1/29/2021
CHECKED		
MATERIAL		
FINISH EPOXY COATED		
MACHINED TOLERANCE: ± 0.005 INCHES		
FABRICATED TOLERANCE: ± 0.063 INCHES		
TITLE		J.L. WINGERT CO.
TITLE		JLW 600 GPM @ 40'TDH SEPARATOR SYSTEM
SIZE	DWG NO	REV
	CT-0600-40-MPK/BS - Submittal	
SCALE	.1:1	SHEET 1 OF 1

Customer	Date	29.01.2021
Contact	Project	
Phone number	Project no.	
Email		

# 55BF1L9C0

## Operating data

Pump type	Single-Stage Pumps	Fluid	Water
No. of pumps / Reserve	1 / 0	Operating temperature t A	°C 4
Nominal flow	US g.p.m. 600.1	pH-value at t A	7
Nominal head	ft 39.99	Density at t A	kg/m <sup>3</sup> 1000
Static head	ft 0	Kin. viscosity at t A	mm <sup>2</sup> /s 1.569
Inlet pressure	kPa 0	Vapor pressure at t A	kPa 100
Environmental temperature	°C 20	Solids	0
Available system NPSH	ft 0	Altitude	ft 0

## Pump data

Make	Goulds Water Technology	Nominal	US g.p.m. 609.8	( 609.8 )
Speed	rpm 3600	Flow	Max- US g.p.m. 805.7	
No. of stages	1		Min- US g.p.m.	
Max. casing pressure	kPa		Nominal	ft 41.3
Max. working pressure	kPa 158	Head	at Qmax	ft 23.8
Head H(Q=0)	ft 53		at Qmin	ft 52.9
Weight	kg 112	Shaft power	hp 7.1	( 7.1 )
	Max. mm 139.7	Max. shaft power	hp 7.4	
Impeller R	designed mm 127	Efficiency	% 67.14	
	Min. mm 127	NPSH 3%	ft 21.4	

## Shaft Seal

Type 21	Xylem
Car/Cer/Buna (Std.) [Max Temp. 212°F/100°C]	
Rotary	Carbon
Stationary	Ceramic
Elastomers	Buna-N
Metal Parts	Type 316 SS

## Motor data

Specific design	3ph TEPE	Speed	3500 rpm	Insulation class	F
Electric voltage	460 V	Frame size	215JM	Colour	RAL 5010
Type	230/460V 215JM (C12A32F5HE2S)	Degree of protection	IP 55		
Rated power	10 hp	Electric current	11.7 A		

## Remarks:

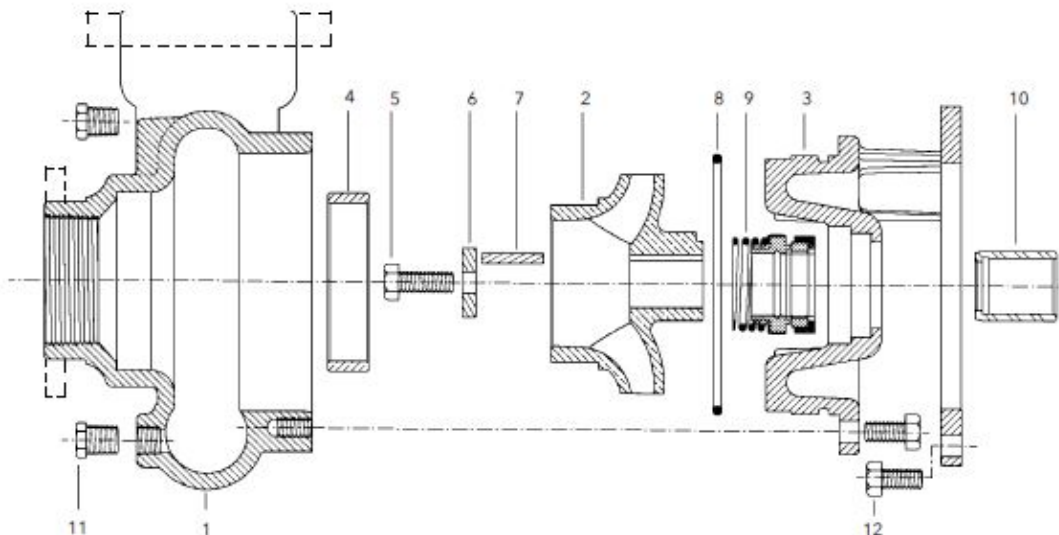
Customer	Date 29.01.2021
Contact	Project
Phone number	Project no.
Email	

# 55BF1L9C0

## Pump Materials

1 - Casing	Cast iron ASTM A48 CL30
2 - Impeller	Sil-brass ASTM B584 C87500
3 - Motor adapter	Cast iron ASTM A48 CL30
4 - Casing wearing ring	Sil-brass ASTM B584 C87500
5 - Impeller bolt	Stainless Steel (AISI 304)
6 - Impeller washer	Stainless Steel (AISI 304)
7 - Square key way	Stainless Steel (AISI 304)
8 - O-ring	Refer Mechanical Seals
9 - Mechanical Seal	Refer Mechanical Seals
10 - Shaft sleeve	Stainless Steel (AISI 304)
11 - 1/4" pipe plug	Steel
12 - Hex head screw	Steel

## MATERIALS OF CONSTRUCTION, MATERIALES DE CONSTRUCCIÓN



Remarks:



Customer	Date	29.01.2021
Contact	Project	
Phone number	Project no.	
Email		

## 55BF1L9C0

### Hydraulic Data

Operating Data Specification		Hydraulic data (duty point)		Impeller design	
Flow	600 US g.p.m.	Flow	610 US g.p.m.	Impeller R	127 mm
Head	40 ft	Head	41.3 ft	Frequency	60 Hz
Static head	0 ft			Speed	3600 rpm

Power data referred to:  
 Water [100%] ; 4°C; 1000kg/m<sup>3</sup>; 1.57mm<sup>2</sup>/s  
 Performance according to ANSI/HI 14.6 - Grade 2B

