

NOTES:
 ALL DIMENSIONS ARE ± 1/8" UNLESS OTHERWISE SPECIFIED. UNIT INCLUDE PURGE HOSE FROM SEPARATOR TO RECOVERY TANK AND RECOVERY TANK TO SUCTION ASSEMBLY. DISCHARGE OF RECOVERY TANK HAS A 3 GPM FLOW CONTROL VALVE TO LIMIT PURGING TO 3 GPM. RECOVERY TANK DIFFERENTIAL PRESSURE SETTING IS ADJUSTABLE FROM 1-100 PSID. DIFFERENTIAL PRESSURE USED TO INDICATOR RECOVERY TANK FILTER BAG NEEDS TO BE CLEANED AND/OR EMPTIED INDICATED BY A RED LED ON THE CONTROL PANEL.

PARTS LIST		
KEY	ITEM	DESCRIPTION
1	INLET	4" RF 150#
2	PUMP	GOULDS: 54AI1K9A0 450GPM @ 40TDH 7.5HP TEPE
3	SKID	CARBON STEEL EPOXY COATED
4	SEPARATOR	XFD-0400
5	RECOVERY TANK	304SS WITH 25 MICRON FILTER BAG
6	CONTROL PANEL	NEMA 4X ENCLOSURE MAIN POWER DISCONNECT MAIN POWER LED INDICATOR PUMP H-O-A SWITCH PUMP RUNNING LED INDICATOR ALARM INDICATOR RECOVERY TANK SERVICE INDICATOR ALARM/SERVICE DRY-CONTACT REMOTE START/STOP TERMINALS (24VDC) 460VAC TO 120VAC TRANSFORMER ADJUSTABLE DIFFERENTIAL SWITCH (FOR RECOVERY TANK SERVICING) WIRED FOR 460VAC/3PH/60HZ
7	PRESSURE GAUGES	LIQUID FILLED 0-150 PSI GAUGES
8	DISCHARGE	4" RF 150#

DRAWN RB	4/17/2020	J.L. WINGERT CO.	
CHECKED			
QA		TITLE	
MFG		JLW 450GPM @ 40TDH SEPARATOR SYSTEM - SUBMITTAL	
APPROVED		SIZE	REV
		C	CT-0450-40-RT
		SCALE	SHEET 1 OF 1
		0.09 : 1	

Customer	Date	16.04.2020
Contact	Project	
Phone number	Project no.	
Email		

54A11K9A0

Operating data

Pump type	Single-Stage Pumps	Fluid	Water
No. of pumps / Reserve	1 / 0	Operating temperature t A	°F 39.2
Nominal flow	US g.p.m. 450	pH-value at t A	7
Nominal head	ft 39.99	Density at t A	lb/ft ³ 62.4
Static head	ft 0	Kin. viscosity at t A	ft ² /s 1.689E-5
Inlet pressure	psi 0	Vapor pressure at t A	psi 14.5
Environmental temperature	°F 68	Solids	0
Available system NPSH	ft 0	Altitude	ft 0

Pump data

Make	Goulds Water Technology	Nominal	US g.p.m. 463.7	(463.7)
Speed	rpm 3600	Flow	Max- US g.p.m. 618.7	
No. of stages	1		Min- US g.p.m.	
Max. casing pressure	psi		Nominal	ft 42.5
Max. working pressure	psi 24.7	Head	at Qmax	ft 22.6
Head H(Q=0)	ft 57		at Qmin	ft 57
Weight	lb 223	Shaft power	hp 5	(5)
	Max. inch 4 3/4	Max. shaft power	hp 5	
Impeller R	designed inch 4 3/4	Efficiency	% 74.66	
	Min. inch 4	NPSH 3%	ft 26.6	

Shaft Seal

Type 21	Xylem
Car/Cer/Buna (Std.) [Max Temp. 212°F/100°C]	
Rotary	Carbon
Stationary	Ceramic
Elastomers	Buna-N
Metal Parts	Type 316 SS

Motor data

Specific design	3ph TEPE	Speed	3500 rpm	Insulation class	F
Electric voltage	460 V	Frame size	213CYZ	Colour	RAL 5010
Type	230/460V 213CYZ (C11A32F5BG2S)	Degree of protection	IP 55		
Rated power	7.5 hp	Electric current	8.6 A		

Remarks:

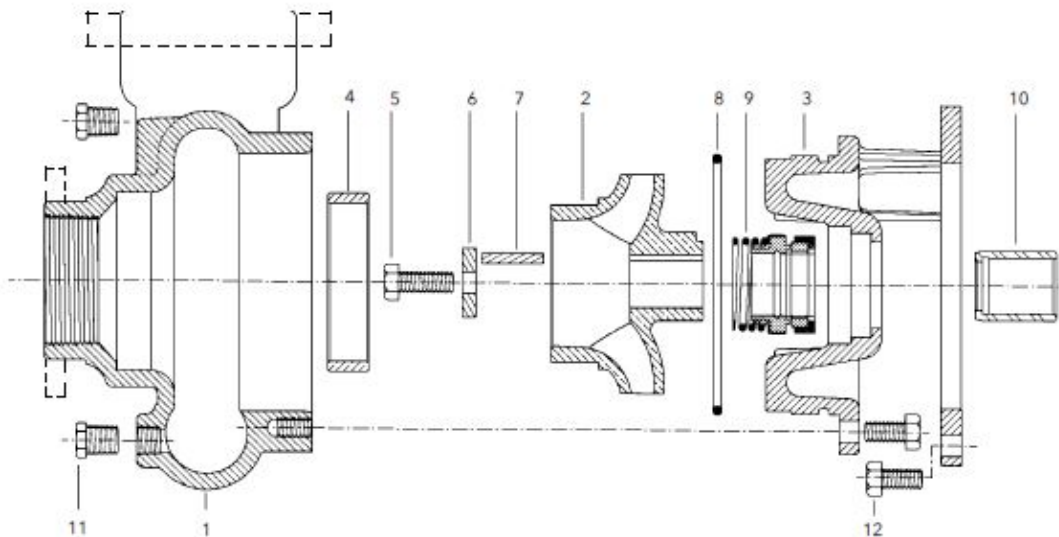
Customer	Date 16.04.2020
Contact	Project
Phone number	Project no.
Email	

54A1K9A0

Pump Materials

1 - Casing	Cast iron ASTM A48 CL30
2 - Impeller	Cast iron ASTM A48 CL30
3 - Motor adapter	Cast iron ASTM A48 CL30
4 - Casing wearing ring	Cast iron ASTM A48 CL30
5 - Impeller bolt	Stainless Steel (AISI 304)
6 - Impeller washer	Stainless Steel (AISI 304)
7 - Square key way	Stainless Steel (AISI 304)
8 - O-ring	Refer Mechanical Seals
9 - Mechanical Seal	Refer Mechanical Seals
10 - Shaft sleeve	Stainless Steel (AISI 304)
11 - 1/4" pipe plug	Steel
12 - Hex head screw	Steel

MATERIALS OF CONSTRUCTION, MATERIALES DE CONSTRUCCIÓN



Remarks:

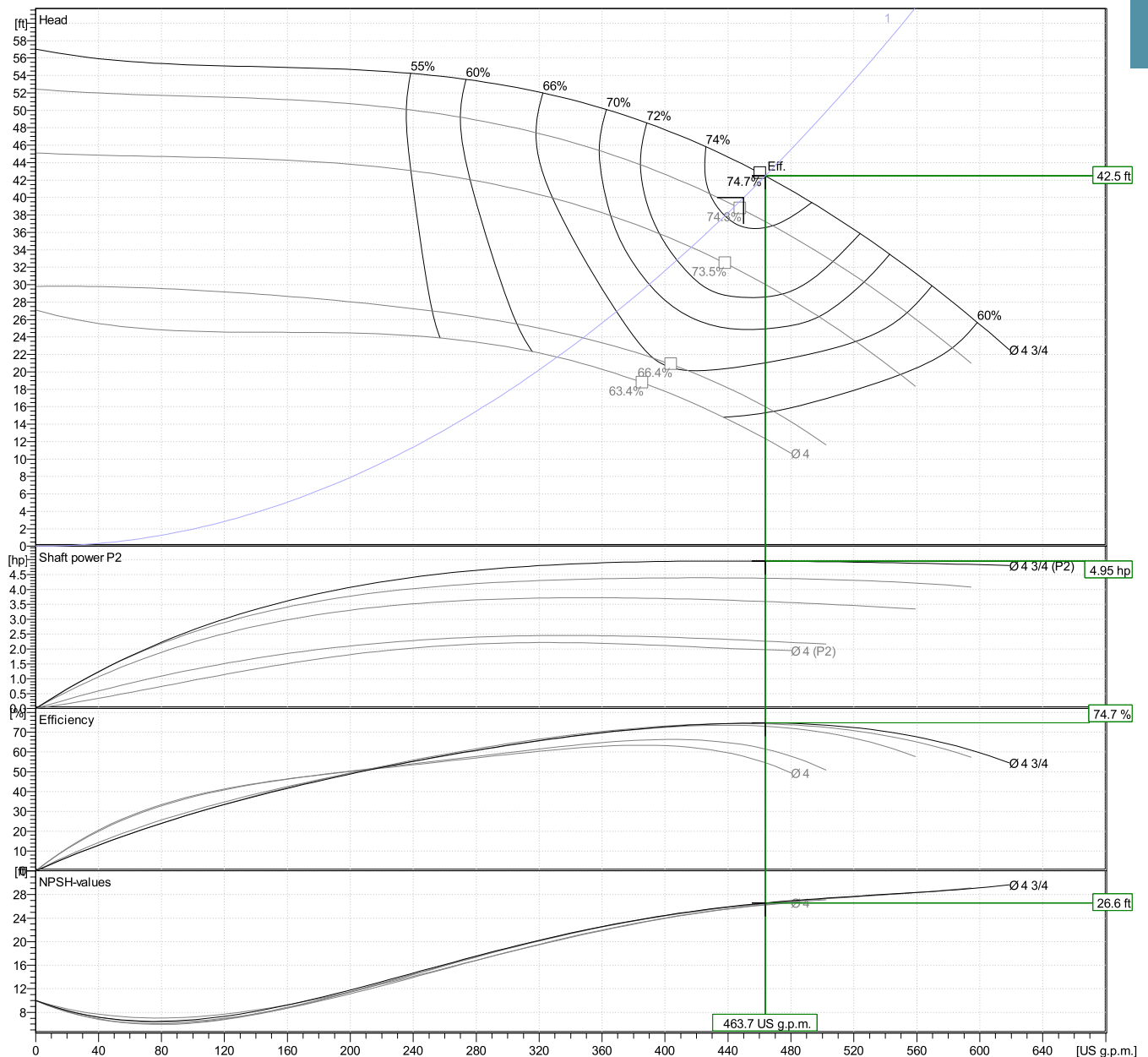
Customer	Date	16.04.2020
Contact	Project	
Phone number	Project no.	
Email		

54A1K9A0

Hydraulic Data

Operating Data Specification		Hydraulic data (duty point)		Impeller design	
Flow	450 US g.p.m.	Flow	464 US g.p.m.	Impeller R	4 ³ / ₄ "
Head	40 ft	Head	42.5 ft	Frequency	60 Hz
Static head	0 ft			Speed	3600 rpm

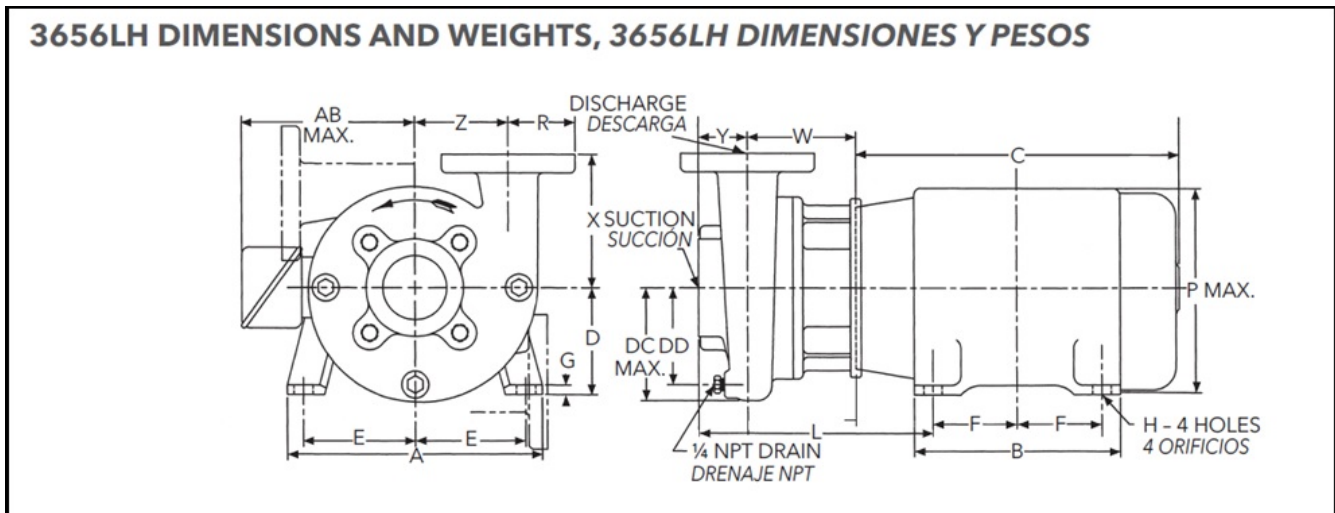
Power data referred to:
Water [100%] ; 39.2°F; 62.4lb/ft³; 1.69E-5ft²/s
 Performance according to ISO 9906 - Annex A



Customer	Date	16.04.2020
Contact	Project	
Phone number	Project no.	
Email		

54A1K9A0

Drawing



Dimensions inch

A	9 ¹ / ₂	H	7 ⁷ / ₁₆			Weight
AB Max.	8 ⁷ / ₁₆	L	12 ³ / ₄			223 lb
B	8	P Max.	10 ³ / ₁₆			
C Ref.	15 ¹ / ₂	R	4 ¹ / ₂			
D	5 ¹ / ₄	Suction	4			
DD	5 ¹ / ₄	W	4 ¹ / ₄			
Discharge	4	X	7			
E	4 ¹ / ₄	Y	4			
F	2 ³ / ₄	Z	4 ¹ / ₂			