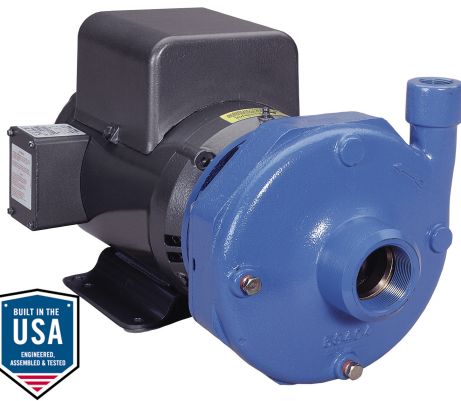


PARTS LIST		
KEY	ITEM	DESCRIPTION
1	INLET VALVE	3" LUG CAST IRON BUTTERFLY VALVE (SHIPPED LOOSE)
2	BASKET STRAINER	3" CAST IRON W/ STAINLESS STEEL BASKET
3	PUMP	GOULDS: 4AI1K9G0 220 GPM @ 80 TPDH 7.5HP
4	SKID	EPOXY COATED CARBON STEEL
5	CONTROL PANEL	NEMA 4X ENCLOSURE MAIN POWER DISCONNECT SWITCH MAIN POWER LED INDICATOOR PUMP H-O-A SWITCH PUMP RUNNING LED INDICATOR ALARM LED INDICATOR 460VAC-120VAC TRANSFORMER MOTOR CONTACTOR & OVERLOAD ADJUSTABLE DIFFERENTIAL PRESSURE SWITCH REMOTE START/STOP TERMINALS (24VDC) ALARM OUTPUT TERMINALS (DRY 3A MAX)
6	SEPARATOR	XFT-0250
7	RECOVERY TANK	304SS RECOVERY TANK WITH 25 MICRON FILTER
8	DISCHARGE VALVE	2 1/2" LUG CAST IRON BUTTERFLY VALVE (SHIPPED LOOSE)

DRAWN RB	7/22/2020	<b>J.L. WINGERT CO.</b>
CHECKED		
QA		
MFG		
APPROVED		TITLE JLW 220GPM @ 80TDH SEPARATOR SYSTEM WITH RECOVERY TANK, STRAINER, ISOLATION VALVES
		SIZE C
		DWG NO CT-0220-80-RT/BS-IV
		SCALE 1 / 10
		REV
		SHEET 1 OF 1

**NOTE:**  
ALL DIMENSIONS ARE ± 1/8" UNLESS OTHERWISE SPECIFIED.

Customer	Date	22.07.2020
Contact	Project	
Phone number	Project no.	
Email		



# 4AI1K9G0

### Operating data

Pump type	Fluid	Water
No. of pumps / Reserve	Operating temperature t A	°F 39.2
Nominal flow	pH-value at t A	7
Nominal head	Density at t A	lb/ft³ 62.4
Static head	Kin. viscosity at t A	ft²/s 1.689E-5
Inlet pressure	Vapor pressure at t A	psi 14.5
Environmental temperature	Solids	0
Available system NPSH	Altitude	ft 0

### Pump data

Make	Goulds Water Technology	Nominal	US g.p.m. 224.3 ( 224.3 )
Speed	rpm 3600	Flow	Max- US g.p.m. 250.7
No. of stages	1		Min- US g.p.m.
Max. casing pressure	psi		Nominal ft 83.2
Max. working pressure	psi 44.5	Head	at Qmax ft 76.2
Head H(Q=0)	ft 100		at Qmin ft 102.7
Weight	lb 280	Shaft power	hp 7 ( 7 )
	Max. inch 7 1/16	Max. shaft power	hp 7.5
Impeller R	designed inch 5 3/16	Efficiency	% 67.74
	Min. inch 4 1/16	NPSH 3%	ft 9.5

### Shaft Seal

Type 21	Xylem
(10K13) Car/Cer/Buna [Max Temp. 212°F/100°C] (Std.)	
Rotary	Carbon
Stationary	Ceramic
Elastomers	Buna-N
Metal Parts	316 SS
Application	General Use, Clean Water to 212°F/100°C, Non-Fluctuating Temp

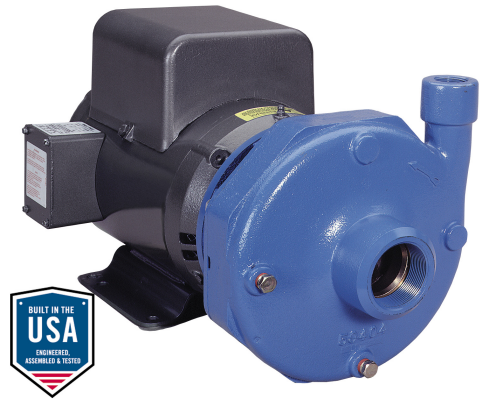
### Motor data

Specific design	3ph TEPE	Speed	3500 rpm	Insulation class	F
Electric voltage	230 V	Frame size	213JM	Colour	RAL 5010
Type	230/460V 213JM (C11A32F5HE2S)	Degree of protection	IP 55		
Rated power	7.5 hp	Electric current	17.8 A		

### Remarks:

Customer	Date	22.07.2020
Contact	Project	
Phone number	Project no.	
Email		

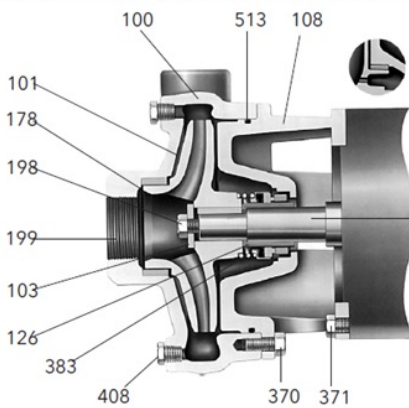
# 4AI1K9G0



## Pump Materials

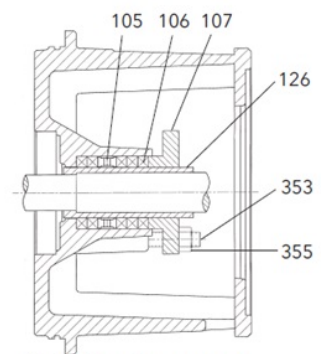
100 - Casing	Gray cast iron ASTM A48 CL20B
101 - Impeller	Gray cast iron ASTM A48 CL20B
103 - Casing wear ring	Gray cast iron ASTM A48 CL20B
108 - Adapter	Gray cast iron ASTM A48 CL20B
184 - Seal housing (One piece with adapter)	Gray cast iron ASTM A48 CL20B
198 - Impeller bolt	AISI Type 300 series stainless steel
199 - Impeller washer	AISI Type 300 series stainless steel
178 - Impeller key	Carbon Steel
370 - Hex head cap screw (adapter to case)	Steel SAE 1200 Grade 5
371 - Hex head cap screw (adapter to motor)	Steel SAE 1200 Grade 5
383 - Mechanical seal	See seal chart
408 - Pipe plug 1/4" or 3/8"	Steel
513 - O-ring	BUNA-N

### 3656 S-GROUP MATERIALS OF CONSTRUCTION MATERIALES DE CONSTRUCCIÓN - GRUPO S, MODELO 3756



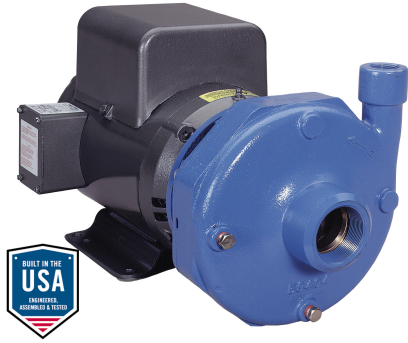
Back wearing ring on S-Group  
(2½ x 3 - 7) only  
*Anillo de desgaste posterior en el  
Grupo S (2½ x 3 - 7) únicamente.*

AISI 1045 steel motor shaft  
extension (typical)  
*Extensión del eje del motor  
de acero AISI 1045 (típico)*



Packed Box Arrangement  
*Caja prensaestopas*

Remarks:



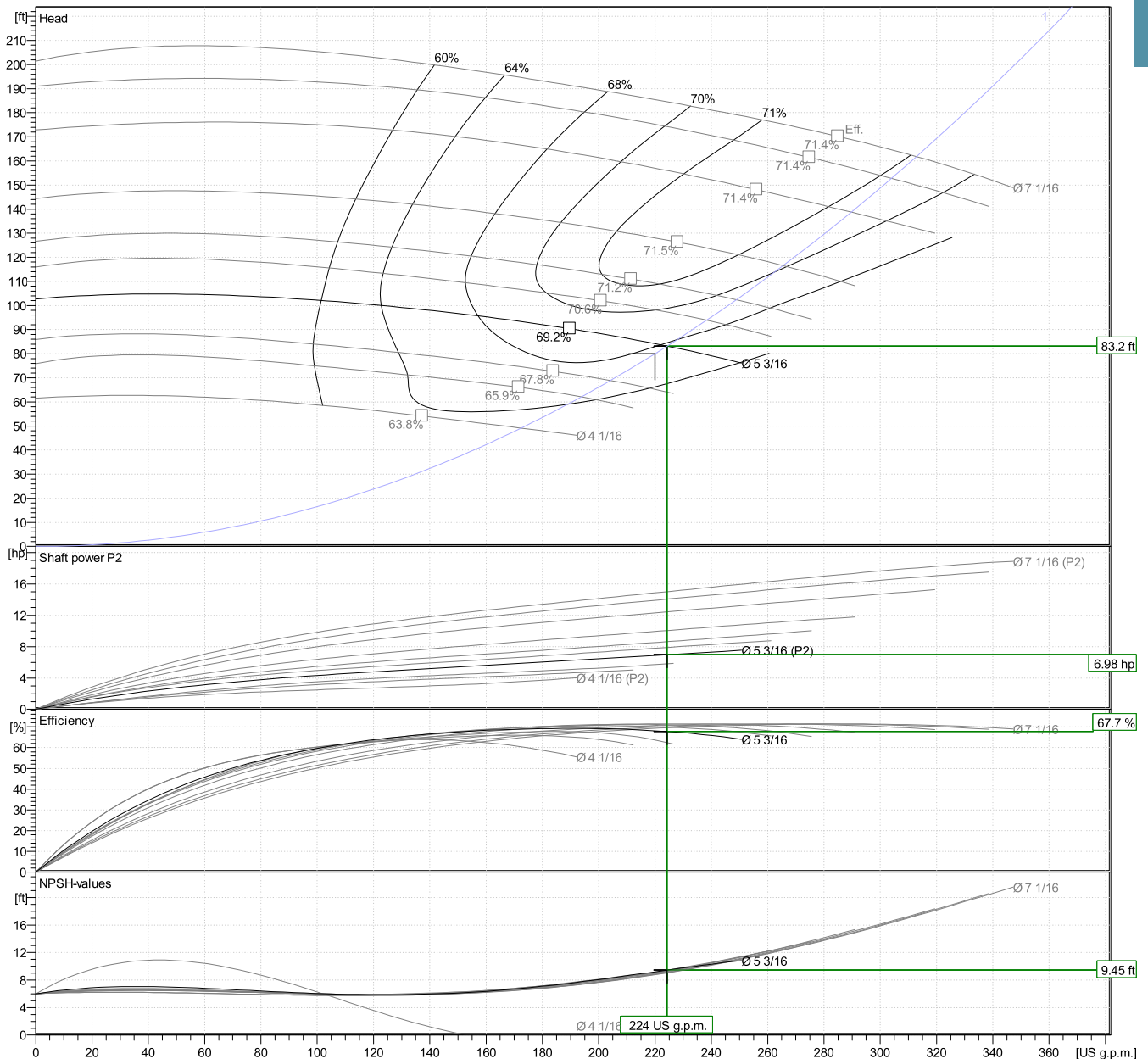
Customer	Date	22.07.2020
Contact	Project	
Phone number	Project no.	
Email		

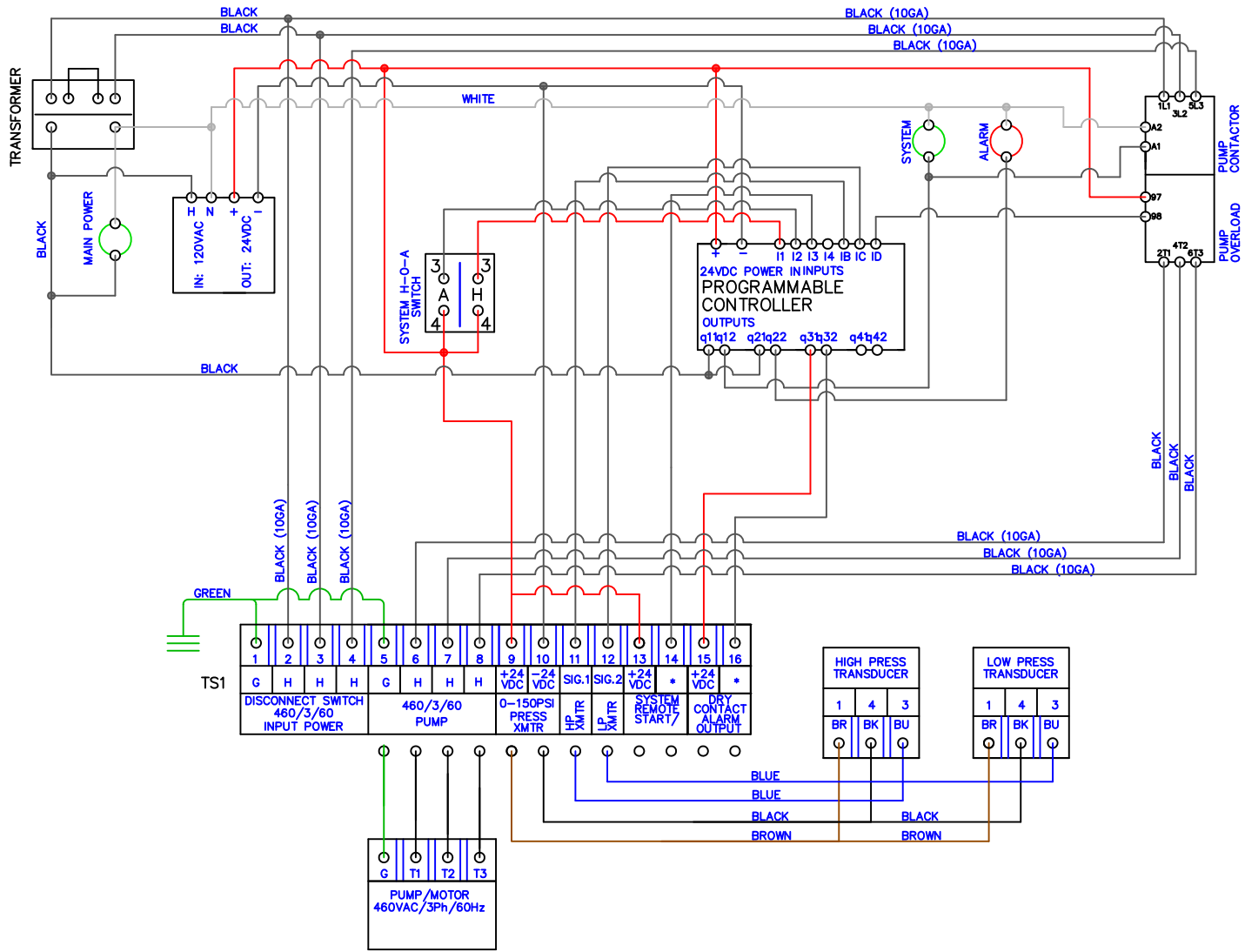
## 4A1K9G0

### Hydraulic Data

Operating Data Specification		Hydraulic data (duty point)		Impeller design	
Flow	220 US g.p.m.	Flow	224 US g.p.m.	Impeller R	5 <sup>3</sup> / <sub>16</sub> "
Head	80 ft	Head	83.2 ft	Frequency	60 Hz
Static head	0 ft	Head	83.2 ft	Speed	3600 rpm

Power data referred to:  
 Water [100%] ; 39.2°F; 62.4lb/ft<sup>3</sup>; 1.69E-5ft<sup>2</sup>/s  
 Performance according to ISO 9906:2012 – Grade 3B





**J.L. WINGERT CO.**  
 P.O. BOX 6207, GARDEN GROVE, CA 92846-6207  
 PHONE: (714) 379-5519 FAX: (714) 379-5549  
 SOUTHWEST REGIONAL SALES OFFICE (602) 470-1015

TITLE:  
 16X14 CT/RT CONTRL PANEL 20HP  
 460V

DRAWN: RB  
 DATE: 7/7/2020

PROJECT:  
 MANUFACTURING  
 C:\ACADWIN\ELECTRIC\

1. USE OF THE INFORMATION CONTAINED IN THIS DOCUMENT FOR OTHER THAN THE SPECIFIED PURPOSE FOR WHICH IT WAS INTENDED OR FOR THE CLIENT WHOM IT WAS PREPARED, IS FORBIDDEN UNLESS EXPRESSLY PERMITTED IN WRITING IN ADVANCE BY THE J.L. WINGERT COMPANY

DO NOT SCALE  
 +/- 1/16IN ON ALL DIMENSIONS  
 UNLESS OTHERWISE SPECIFIED

PART # R8952-3  
 SHEET: 1 OF 1

REV. #:	DESCRIPTION:	BY:	DATE:
---------	--------------	-----	-------

A

B

C

D

E

F

1

2

3

4

5